

Workshop on National Platforms 23 - 29 August 2008, Davos Switzerland



Republic of Mozambique
MINISTRY OF STATE ADMINISTRATION
NATIONAL INSTITUTE FOR DISASTERS MANAGEMENT

Disaster Risk Reduction National Coordinating Mechanisms

Context of Disaster Risk Reduction (DRR) in Mozambique

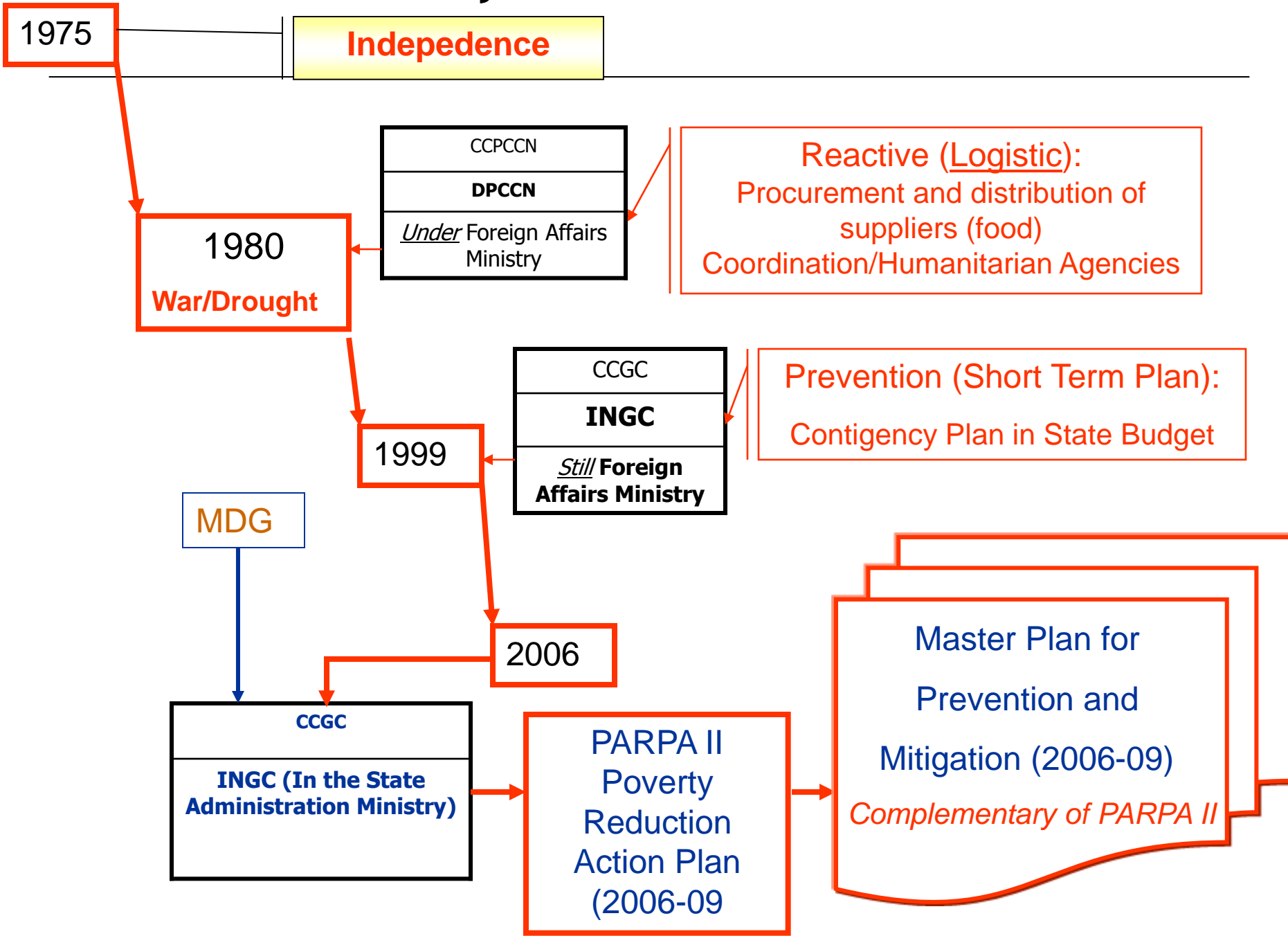
- ✦ The Mozambique historical context of Disasters risk reduction can be divided in two parts:
- ✦ ***1.1 During war time (1976-1992)***
- ✦ The government approach during this period were oriented to reactively respond to the emergency resulted from the war. *The national platform for disasters coordination was launched at the same time through the creation of Department for Prevention and Combat to Natural Calamities (DPCCN);*
- ✦ The aim of this department was to provide humanitarian and logistic assistance to people affected by the war

Cont.

2. ***Post war time***

- ✦ The remarkable features of post war time are the new challenges that contributed to paradigm shift on the disasters management approach, namely:
 - ✦ Global Climate change;
 - ✦ Recurrence of man made and natural disasters.
- ✦ In order to cope with these challenging situation, the disasters management approach inspite of being reactive, the government adopted a proactive one. Thus the DPCCN undergone deep reform which enabled the creation of National Institute for Disasters management (INGC) through the decree 38/99, of 10 November;
- ✦ (*Below the historical summary*)

Historical Summary



Legal Framework for DRR and DRR National Plan

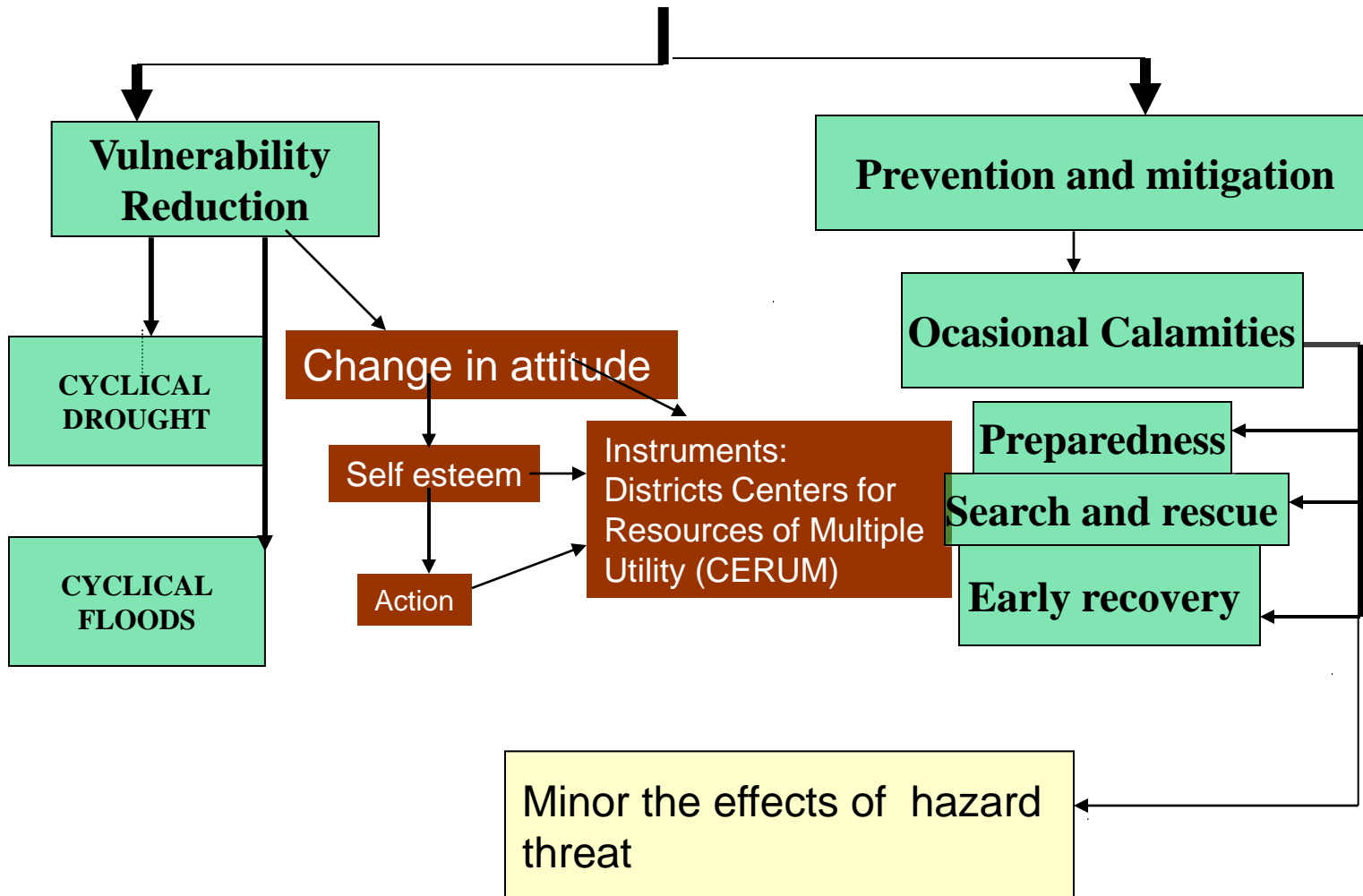
- ✦ Envisaging the extreme poverty reduction the government has approved the Plan of Action for Absolute Poverty Reduction (PARPA II) for the period of 2006-2009. This plan state that the success of the fight against extreme poverty depends on the reduction of the devastating effects of disasters.
- ✦ In this light, by 2006 the National Master Plan of Disasters Risk Reduction have been approved with focus on:
 - ✦ Reduce the number of human victims and losses of property;
 - ✦ Consolidate the prevention aspects;
 - ✦ To endow the country with prevention and mitigation mains.
- ✦ In order for achieve the above-mentioned goals the INGC structures enveloped the following directorates:
 - ✦ Directore for Prevention and Mitigation;
 - ✦ Directorate for Promotion of Development in arid and semi-arid zones;
 - ✦ Directorate for Coordination of Ressetlement and reconstruction;
 - ✦ National Operative Centre of Emergency replicated in 3 regions (South, Centre and north) (CENOE)
 - ✦ National Unity for Civil protection (UNAPROC)
- ✦ Below are the main elements of Master Plan

Cont.

- ✦ In order to complement the PARPA the government approved (in 2003) a state reform; Law of State local Organs (LOLE). This broadened the competences, autonomy and responsibilities of District and administrative post endowing them with self resources for projects of development and other issues within the communities concerns;
- ✦ Part of resources were devoted to disasters risk reduction and emergency response;
- ✦ The LOLE also enabled the district to integrate in the strategic sectorial plans issues of disasters risk reduction;
- ✦ Also it allowed the creation of institutions for communities participation in the process of disasters risk reduction - the Local Committees of Risk Management functioning as UNAPROC ramification;
- ✦ It enabled the participation of civil society organization through G20 even the youth organization in different stage of disasters circle;

Cont.

4. Master Plan Main Elements



Cont. Hoygo Framework for Action

- ✦ Related to Hoygo framework, Mozambique has a focal point represented by the Deputy Director of the INGC (*referring the mandante of deputy director for HFA*);
- ✦ UNDP advisor for Disasters' issues;

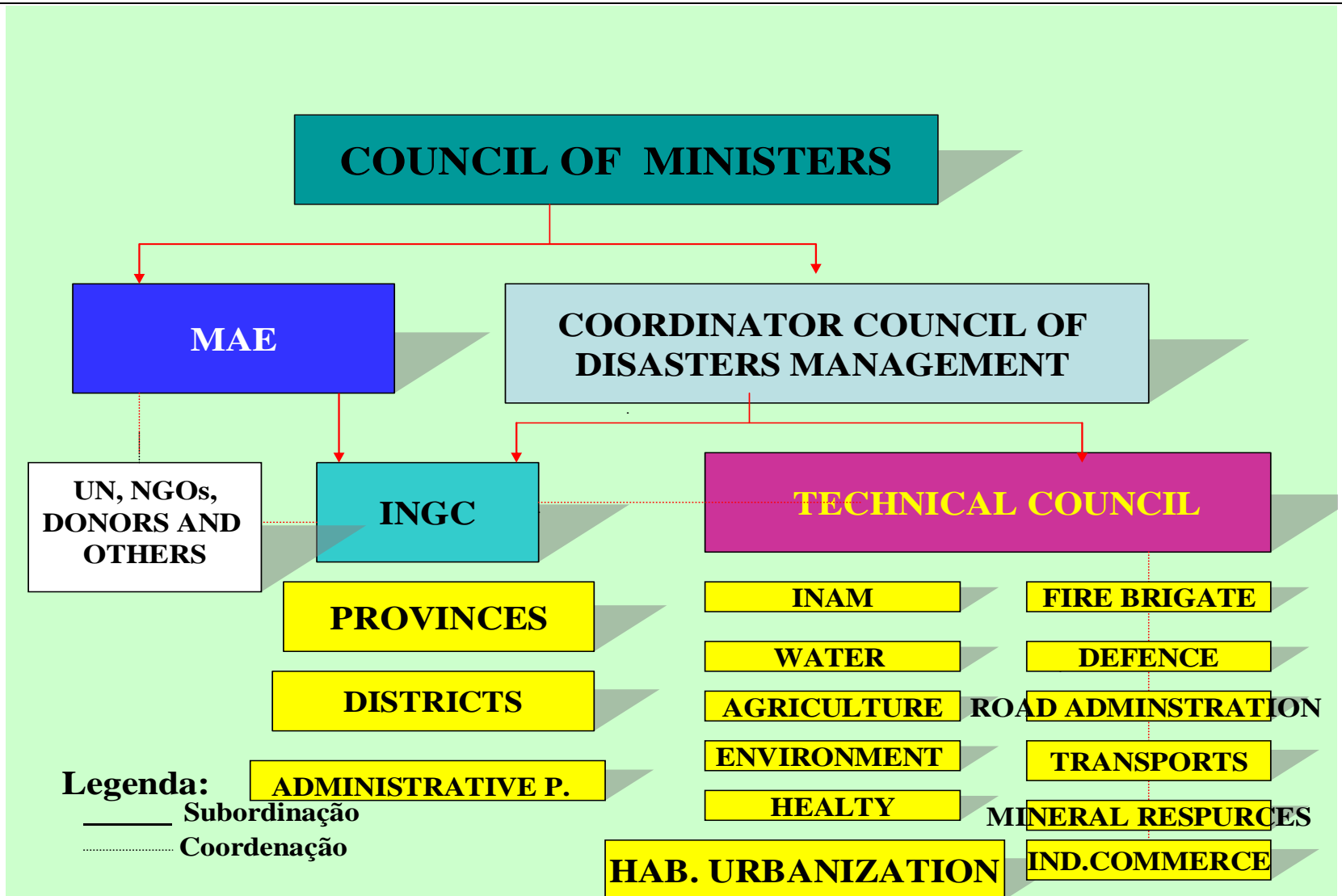
DRR in Sectoral Policies

- ✦ Due to the cross-cutting nature of disaster and in order to cope with its several impacts there is in place the National Centre for Emergency (CENOE);
- ✦ CENOE's paramount importance goal: provide to all the stakeholders involved in the prevention, mitigation and hazards response with a guiding instruments, procedures, tasks and actions for the technical and scientific monitor, warning broadcasting, operations control, as well as activation and deactivation of the emergency operations.

CENOE's Concept:

- ✦ CENOE is a structure of multisectoral coordination and of the decision making where the representatives of institutions, organizations and a group of actors converge and directly participate in the calamities response operations
(*see the organization chart below*).

Organization Chart for Disaster Management



National Preventive Disaster Risk Reduction Mechanisms

Functioning structures

- ✦ Coordinator Council of Disasters Management (composed by the ministers and chaired by Prime Minister)– political decision;
- ✦ Technical Council of Disasters Management (CTGC) – This is system of permanent official and the focal points system under the coordination of the INGC Director. This level of competence constantly provide information to its maximum leaders present at the CENOE, in order to make them take timely needed decisions;
- ✦ The other institution mentioned on the organization charts are integrated in four main sectors:
 - ✦ **Planning and information** (leadership Ministry of Plan and development);
 - ✦ **Communication** (leadership INGC and Cabinet of Information);
 - ✦ **Infrastructures** (Ministers of Housing and Public work);
 - ✦ **Social working** (Ministry of Health)

**Notice that the partner according with their specialization participate in different sector.*

Nacional Preventive and Crises Management Mechanisms

Normal functioning

Coordinator

Information

Monitor

Communication

24 Hours/Day

Functioning in Alert situation

Focal point system
Of government
sector

Plan and
information
sector

Infrastructures
sector

Social affairs
sectors

Syst. Com. Incidents

National unity
for civil protection
(UNAPROC)

Floods and cyclones

Seism and Tsunamis

Burning

Others:

PARTIAL OR TOTAL CENOE ACTIVATION

National emergency within the limits of the Contingency Plan

- a. This level is controlled only by small government representatives (the sectors represented in CCGCN);
- b. The focal point are invited to be in CENOE, where they must be when the emergency is in force.

Partial Activation

- a. The government sectors needed to address the situation go beyond the sectors represented in CCGCN;
- b. The focal points are invited to be in CENOE when the emergency is in force.

Total Activation

National emergency out of the limits of the contingency Plan

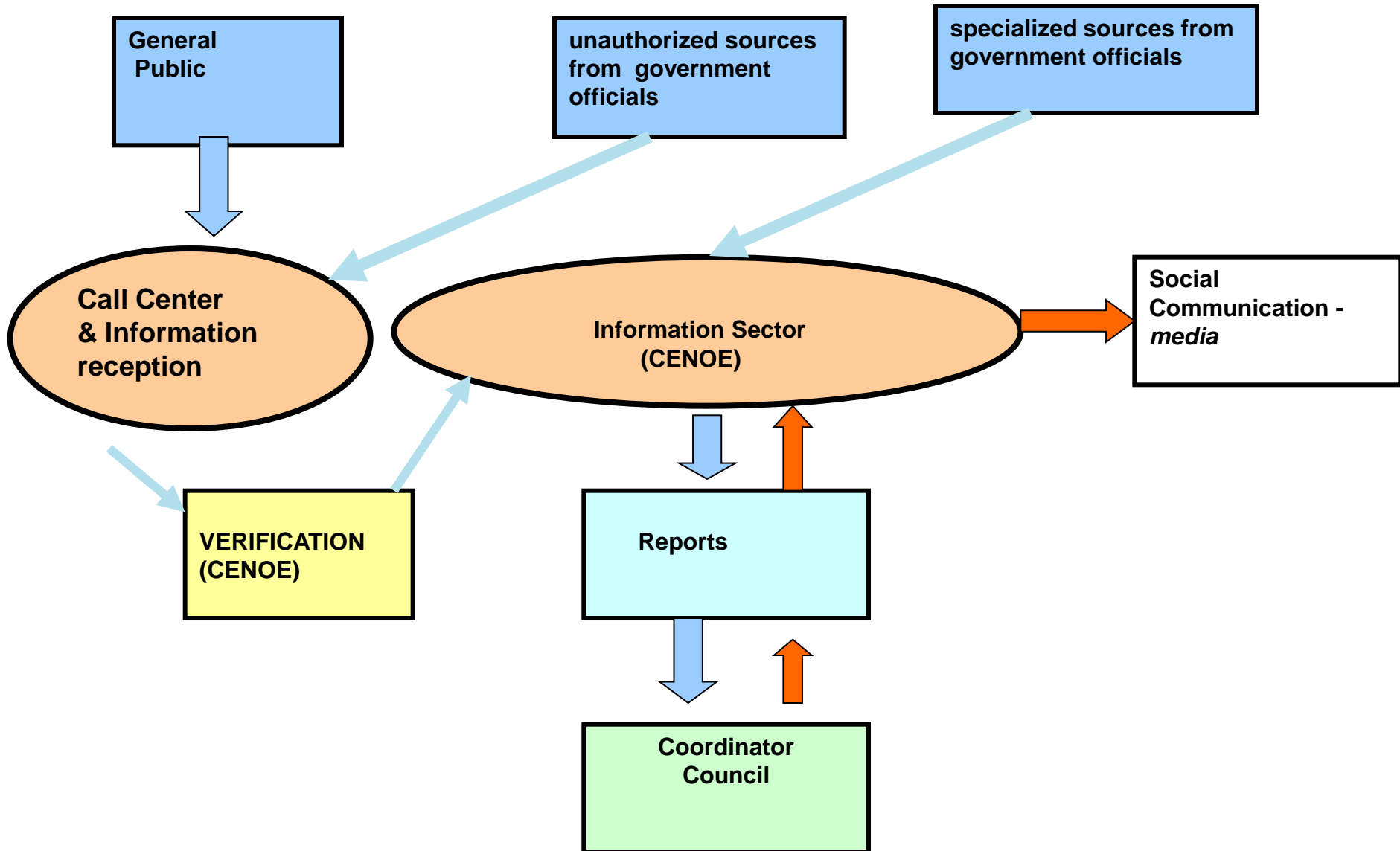
- a. This level is controlled only by small government representatives (the sectors represented in CCGCN);
- b. The CCGCN representatives and their focal points are invited to the CENOE, where they must be when the emergency is in force.

Partial Activation

- a. The government sectors needed to address the situation go beyond the CCGCN quorum
- b. All the relevant Ministers for the situation and their collaborators are invited to be in CENOE where their must be when the emergency is in force.

Total Activation

INFORMATION INFLUX



Working Methods and Financial Sources

- ✦ The mechanisms are under the guidance and umbrella of the Master Plan for Disasters Prevention and Management;
- ✦ The financial sources are under the state budget and some donors contributions;
- ✦ Due to INGC financial autonomy some funds are generated through its patrimony;
- ✦ The financial support from the State are canalized through the Annual Contingency Planning that produces annual scenarios of emergency situation based on SARCOF forecasting;
- ✦ The referred financial support are allocated to the main sectors which are, in turn, accountable for activities undertaken on they field.

Institutional Actors and Stakeholders in Normal Times

⊕ **Government Sector**

- ⊕ INGC
- ⊕ CTGC
- ⊕ UNAPROC

⊕ **Civil Society**

- ⊕ *International* - UN system (different clusters);
- ⊕ *National* - G20
- ⊕ FEMSNET;
- ⊕ *District* - Youth Organization
- ⊕ *Local* – LCRM

⊕ **Private**

- ⊕ The private sector usually participate with some donations to assist the affected people

Institutional Actors and Stakeholders in **Crisis Times**

Government Sector

- ⊕ CCGC (composed by all the ministries)
- ⊕ CTGC
- ⊕ UNAPROC (composed with army members, NGO's, LCRM among others)

Civil Society

- ⊕ *International* - UN system (DFID, RCO, WFP, UNDP, UNICEF, FAO all of them organized in different clusters);
- ⊕ *National* - G20
- ⊕ FEMSNET;
- ⊕ *District* - Youth Organization
- ⊕ *Local* – GTZ-PRO-GRC (LCRM)

Private

- ⊕ The private sector usually participate with means of search and rescue (boats);
- ⊕ Participate in search and rescue operations;

DRR Institutional Relation to Climate Change

- **CTGC – is the mechanism used to coordinate DRR activities of different Government entities, Civil Society partners and other stakeholders. It includes CC related activities which are jointly implemented under the coordination of the MICOA and INGC. The structure is replicated at provincial and district level.**
- **Mainstreaming DRR into the Poverty Reduction Strategy (PARPA) is a priority for Mozambique. This will enable the mainstreaming of DRR into development plans, based on clearly agreed upon indicators.**

Regional Coordination of DRR and South-South Collaboration

Regional Coordination

- ✦ The Mozambique national platform for disasters risk reduction as regional link to SADC (SARCOF);
- ✦ Information exchange;
- ✦ Coordination of water resources (rivers) management;
- ✦ International link through ISDR (HFA); Japan Early Warning System in Indian Ocean;

South-South Coordination

- ✦ The CENOE model in place since 2006, is a platform for disasters risk reduction resulted from the cooperation with Latin America countries (Guatemala);
- ✦ Exchange of expertise;

Identified Strengths and Weaknesses

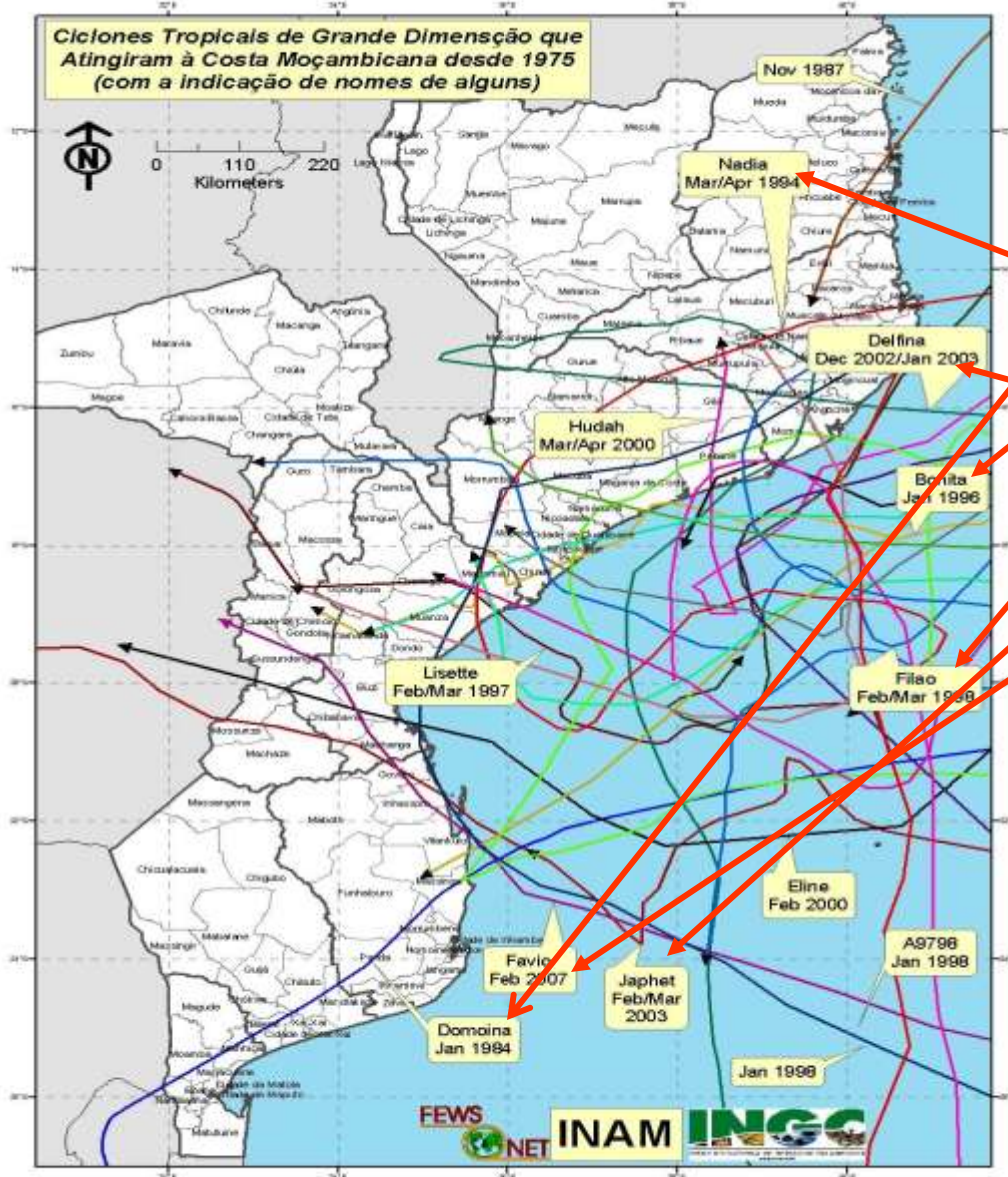
Strengths

- Government fully involved in decision making
- Strong coordination within the government institutions, UN agencies, Civil Society and others
- A well established organization set up with the major actors from CENOE. Four acting areas (Planning and information, Communication, Infrastructure and Social services) with their clusters.
- There is a strong community involvement in disaster management

Weaknesses

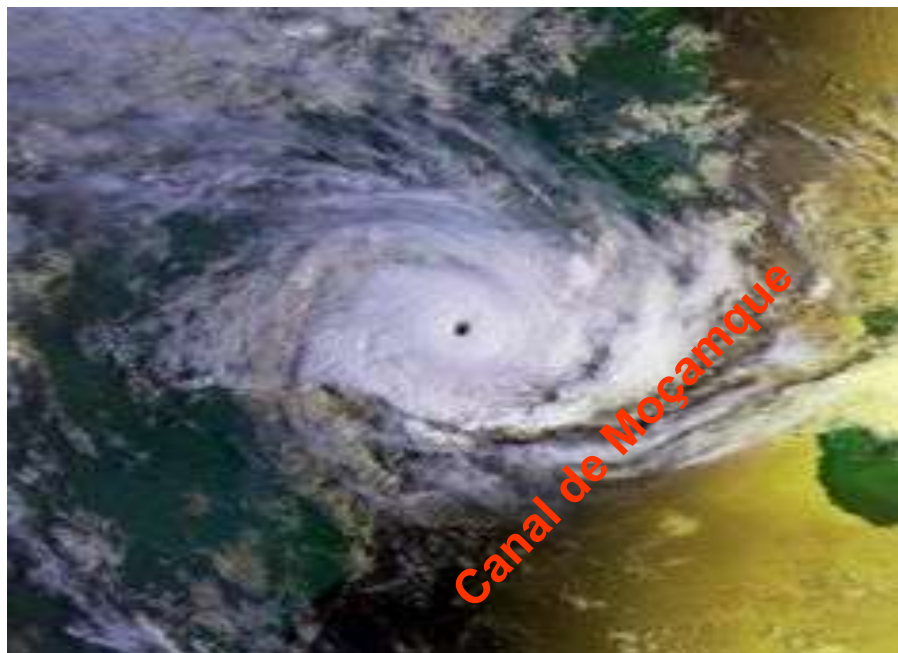
- Still have low resources (financial, material and human)
- weak participation of our partners in reconstruction phase
- Still a resistance from our population to move and leave in a safe areas, however, there is a sensibilization going on around the communities

TROPICAL CYCLONES OF HIGHER DIMENSION



- Demoina: (109 óbitos, 80.000 afectados)*
- Nadia: (54 óbitos, 903.000 afectados);*
- Bonita: (1 óbito)*
- Delfina: (59 óbitos, 497021 afectados)*
- Filao: (100 óbitos, 500 afectados)*
- Japhet: (21 óbitos, 105.231 afectados);*
- Favió: (9 óbitos, 150.000 afectados).*

Ciclone Eline (2000)



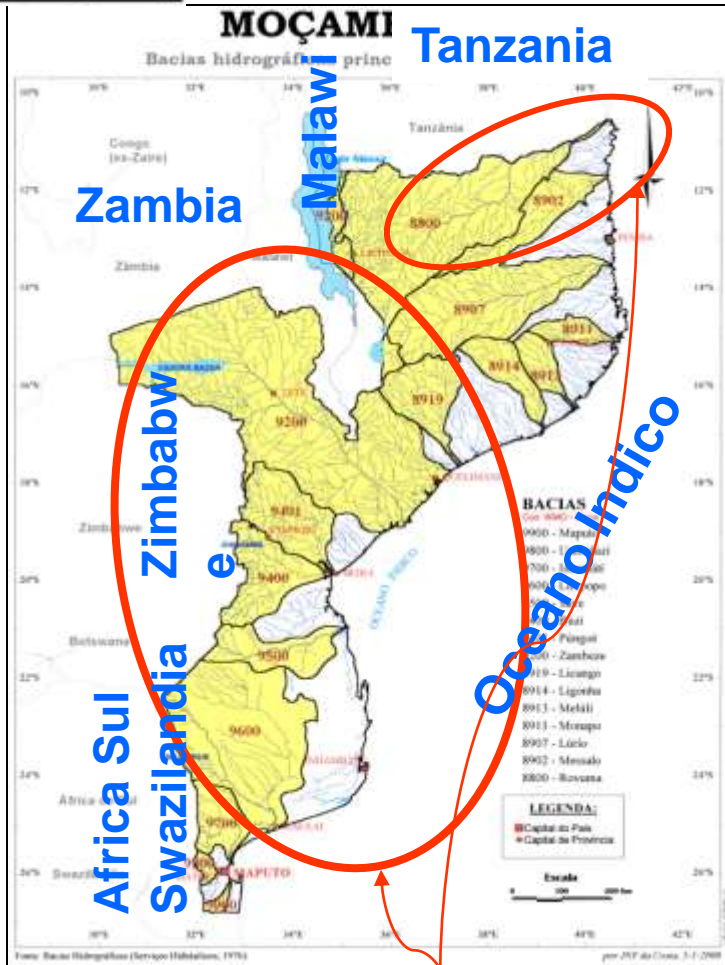
Impactos do Ciclone



- Mortos
- Sem Abrigo
- Doências/Epidemicas
- Perda de Propriedades



FLOODS OF HIGH MAGNITUDE



CHEIAS

Ano	Bacias Hidrográficas	Deth	Afected
1972	Limpopo		
1975	Limpopo, Incomati		
1984	Limpopo, Incomati		
1985	Pungue, umbeluzi, Maputo, Incomati, Zambeze		
1997	Motomoli, Licungo, Lurio		
1998	Govuro	23	70.000
1999	Umbeluzi, Incomati, Limpopo, Pungue, Zambeze, Lugela		400.000
2000/01	Limpopo, incomati, Umbeluzi, Save, Buzi, Pungue, Zambeze, Chire, Licungo	699	4.500.000
2006/07	Zambeze, Buzo	113	181.000
2008	Zambeze, Pungue, Buzi, Save, Lucungo, Messalo	9	102.000